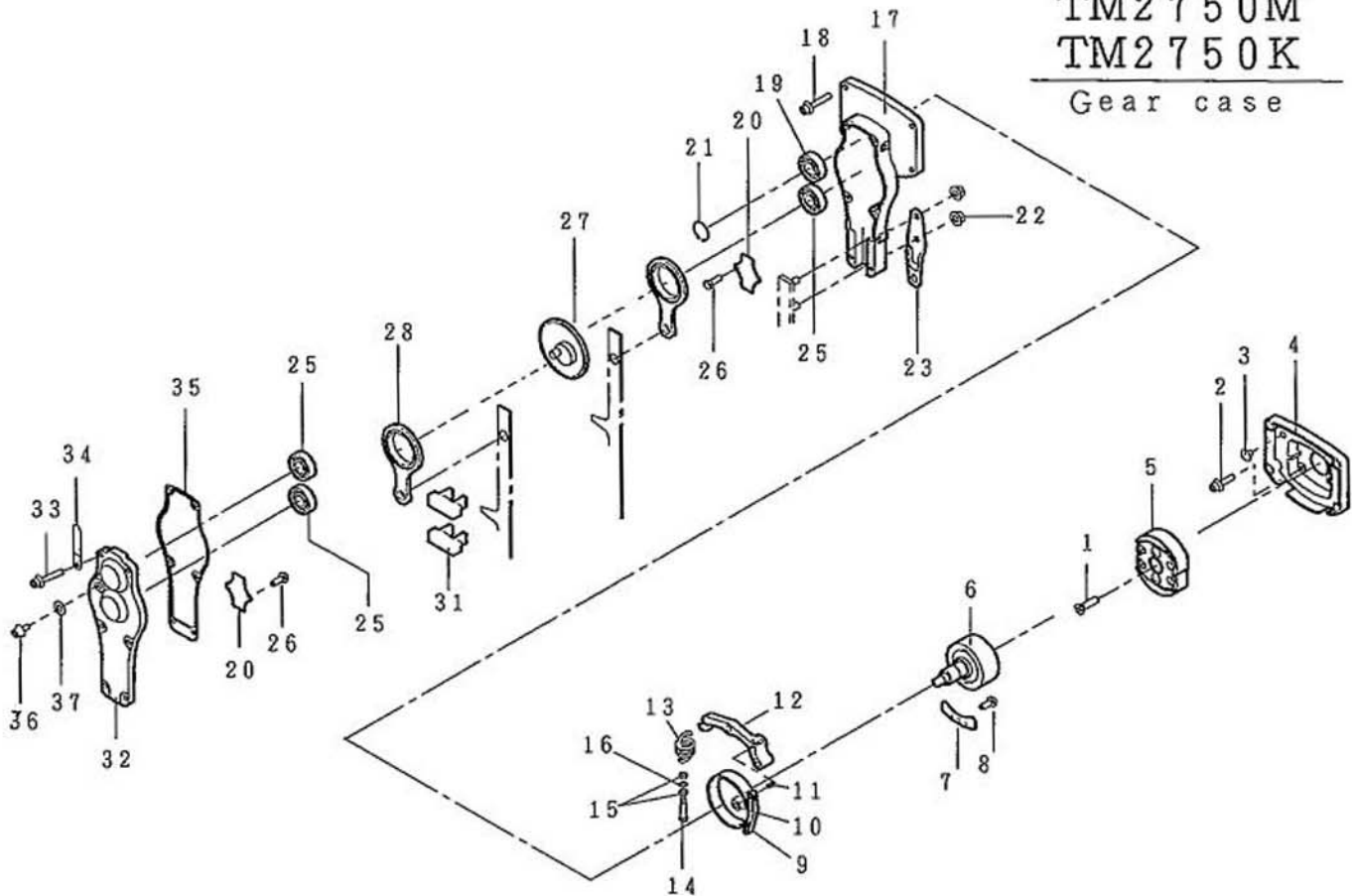


TM2750M

TM2750K

Gear case

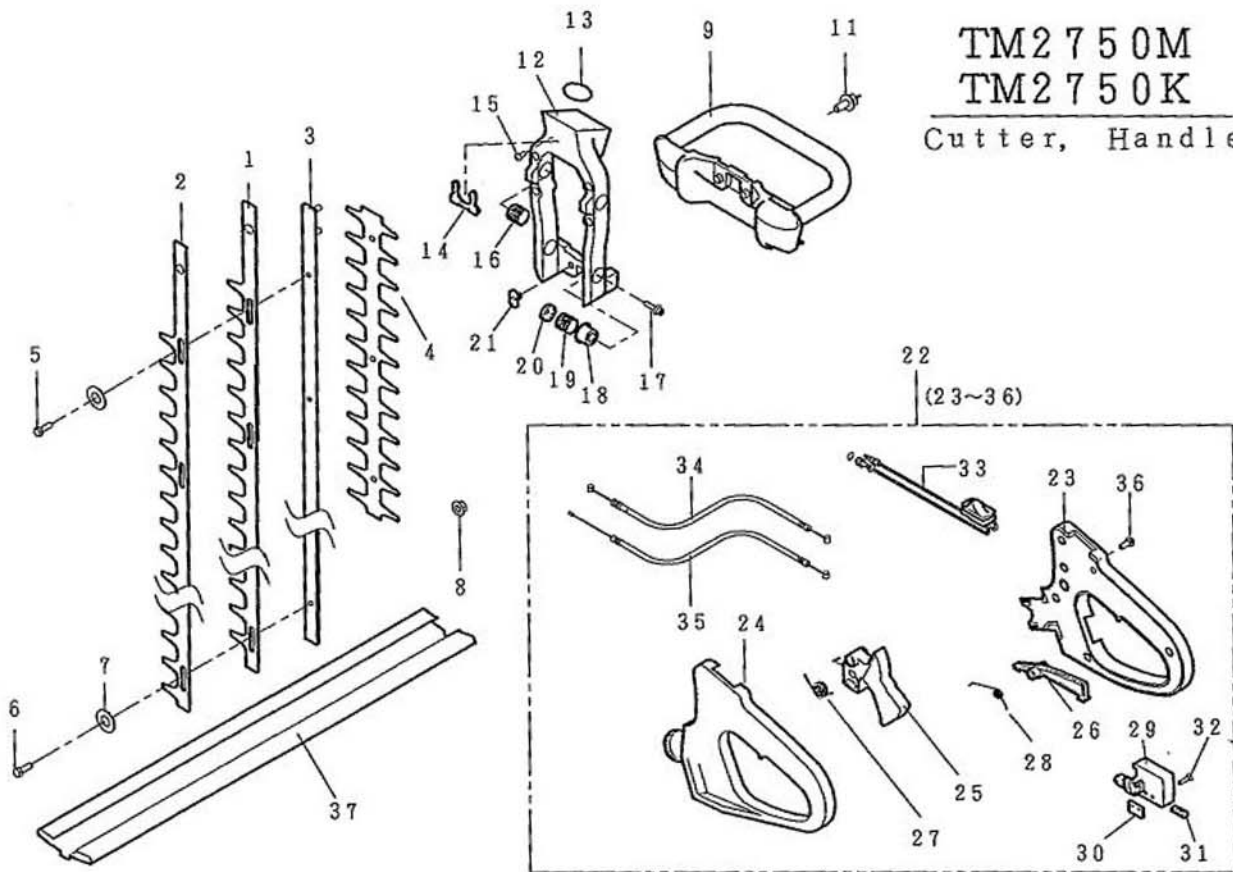


46013-853

REF. NO.	PARTS NO.	PARTS NAME	Gear case			JAN. 2001	REMARKS	1 / 4 RECOMM. (%)
			Q' TY	INCLUDING				
1	375L 0620	(+) FLAT SCREW M6x20 (SW)	1					3
2	423U 0515	SOCKET SCREW FLANGE M5x15	4					3
3	91033 137	BLIND COVER	1					3
4	51070 129	ENGINE BASE	1					3
5	71019 118	CLUTCH SHOE ASS'Y	1					5
6	11014 216	CLUTCH DRUM C. P.	1					5
7	11050 169	FIXING PLATE	1					3
8	423U 0408	SOCKET SCREW FLANGE M4x8	1					3
9	68053 103	BRAKE BAND	1					6
10	612L 0400	PLAIN WASHER	1					5
11	711V 0416	SPRING PIN $\phi 4 \times 16$	1					5
12	11104 158	ARM	1					5
13	68013 324	SPRING	1					5
14	31032 106	ADJUST SCREW	1					3
15	31058 160	HEXAGON NUT	2					3
16	611L 0600	PLAIN WASHER	1					3
17	51068 106	CAM CASE	1					1
18	423U 0518	SOCKET SCREW FLANGE M5x18	4					3
19	954B 6003	BEARING $\phi 6003$ ZZ C3	1					4
20	11050 168	FIXING PLATE	2					1
21	812V 1700	C-SNAPRING FOR SHAFT $\phi 17$	1					5
22	571L 0600	HEXAGON NUT FLANGE	2					3
23	11102 208	HOLDER	1					1
25	954B 0629	BEARING $\phi 629$ ZZ C3	3					4



TM2750M  
 TM2750K  
 Cutter, Handle



46013-853

REF. NO.	PARTS NO.	PARTS NAME	275MKR Cutter. Handl		JAN. 2001	REMARKS	3 / 4
			Q' TY	INCLUDING			
1	91053 125	CUTTER (A)	1				15
2	91054 114	CUTTER (B)	1				15
3	11051 129	CUTTER GUIDE	1				10
4	51090 122	PROTECTOR	1			RED	3
5	31029 105	STEP BOLT (L)	1				6
6	31029 110	STEP BOLT (S)	3				6
7	68002 101	CUTTER WASHER	4				6
8	584L 0600	U-HEXAGON NUT FLANGE M6	4				4
9	51027 238	HANDLE	1			RED	3
11	31057 235	BOLT M5×20 (SW, PW)	2				3
12	51022 171	BRACKET	1			RED	3
13	214B 5000	O-RING S50	1				3
14	11086 179	STOPPER	1				3
15	477L 0408	(+) TRUSS TAPPING SCREW	2				3
16	68013 326	SPRING	2				4
17	423U 0515	SOCKET SCREW FLANGE M5×15	4				3
18	11102 210	HOLDER	4				3
19	68013 327	SPRING	2				4
20	11102 209	HOLDER	4				3
21	31038 102	FIXING NUT	2				3
22	71014 368	HANDOLE ASS'Y (for type M)	1			RED	-
	71014 369	HANDOLE ASS'Y (for type K)	1			RED	-
23	51106 127	HANDLE (R)		1		RED	3
24	51106 128	HANDLE (R)		1		RED	3

